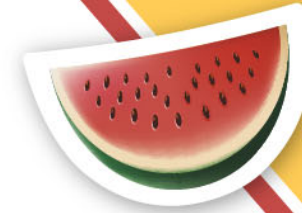


# JUNE | 2026

## Meal Site Main Menu



### MONDAY

### TUESDAY

### WEDNESDAY

### THURSDAY

### FRIDAY

<p><b>1</b> Italian Chicken Breast Brown Rice Green Beans Beets Mandarin Oranges Dinner Roll/Butter 6</p>	<p><b>2</b> Hamburger Hamburger Bun Baked Beans Broccoli Pears 6</p>	<p><b>3</b> Polish Sausage Hot Dog Bun Sauerkraut Cali Blend Applesauce 4</p>	<p><b>4</b> Stuffed Chicken Rice Pilaf Asparagus Carrots Fresh Fruit 5</p>	<p><b>5</b> Salisbury Steak &amp; Gravy Mashed Potato Peas Fruit Cobbler 8</p>
<p><b>8</b> Bourbon Chicken White Rice Three Bean Salad Fruit Crisp 8</p>	<p><b>9</b> Hotdog Hotdog Bun Peas Cauliflower Fresh Fruit Fig Newton 6</p>	<p><b>10</b> Chicken Wings Baked Potato Sautéed Cabbage Tomato salad Fruited Jell-O 5</p>	<p><b>11</b> Pork Chops &amp; Gravy Mashed Potatoes Corn Peaches Wheat Bread/Butter 5</p>	<p><b>12</b> S &amp; S Meatballs Egg Noodles Wax Beans Asparagus Ambrosia Dinner Roll/Butter 7</p>
<p><b>15</b> Cabbage Roll Au Gratin Potatoes Peas &amp; Carrots Applesauce Banana Pudding 6</p>	<p><b>16</b> Chicken Diane White Rice Asparagus Beets Fresh Fruit 5</p>	<p><b>17</b> Sliced Ham Sweet Potatoes Peas Pineapple Tidbits Wheat Bread/Butter 7</p>	<p><b>18</b> Chicken Salad Wheat Croissant Coleslaw Mandarin Oranges 6</p>	<p><b>19</b> <b>AgeWell Closed</b></p>
<p><b>22</b> Seasoned Chicken Breast Red Roasted Potatoes Cali Blend Tropical Fruit Dinner Roll/Butter 6</p>	<p><b>23</b> Pork Chop Suey White Rice Corn Squash Ambrosia Wheat Bread/Butter 6</p>	<p><b>24</b> Beef Stew Mashed Potatoes Cali Blend Green Beans Fruited Yogurt Birthday Cake 6</p>	<p><b>25</b> Chicken Cavatappi Garlic Bread Lima Beans Side Salad Applesauce 6</p>	<p><b>26</b> Pork BBQ Hamburger Bun Baked Beans Wax Beans Tropical Fruit String Cheese 7</p>
<p><b>29</b> Swedish Meatballs Egg Noodles Spinach Pineapple Tidbits Bread Pudding 7</p>	<p><b>30</b> Scalloped Potato &amp; Ham Mixed Veggies Fruit Cobbler Fresh Fruit 7</p>	<p><b>1</b></p>	<p><b>2</b></p>	<p><b>3</b> 1 carb count = 15g of carbohydrates</p>

**Menu includes  
Low Fat Milk**

**Meals include 1/3  
of the Recommended  
Daily Allowance (RDA)**

**Meals Subject  
to Change**

**6/19 AgeWell Closed  
6/24 Birthday Celebration**



231-755-0434  
800-442-6769